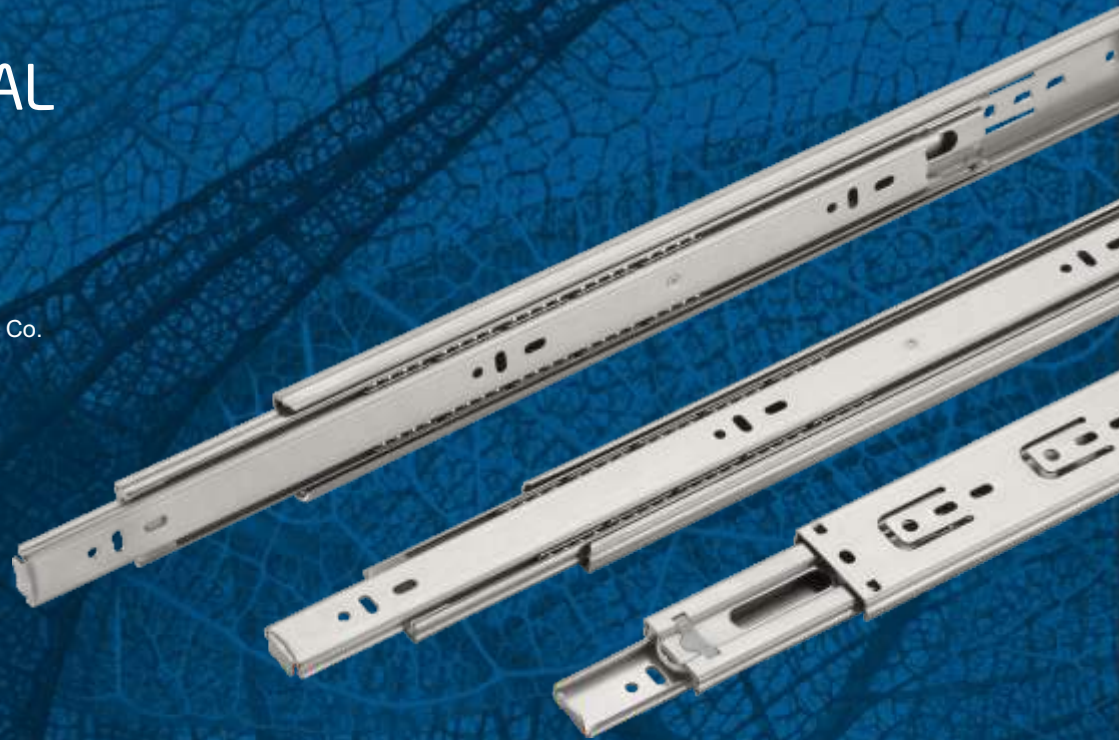
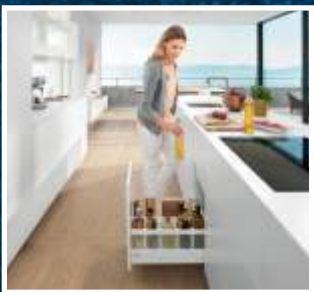


# ARCHITECTURAL HARDWARE SOLUTIONS

An **ISO 9001:2015** Certified Co.



PREMIUM QUALITY



[www.unimec.in](http://www.unimec.in)

DRAWER SLIDES  
SMART KITCHEN TANDEM BOX  
HINGES

**TOUCH & MOVE**



# Index.

3. OVERVIEW

4. KEY FEATURES

6. ZINC DRAWER SLIDES

7. BLACK DRAWER SLIDES

8. S.S DRAWER SLIDES

9. SOFT CLOSE DRAWER SLIDES

10. PUSH TO OPEN DRAWER SLIDES

10. SLIM TANDEM BOX

11. REGULAR TANDEM BOX

12. HINGES SYSTEMS

[www.unimec.in](http://www.unimec.in)

Innovative  
Design Long-lasting  
**Performance**

# Company Profile

**Universal Group** is a versatile Hardware products manufacturing and Import unit with over 8 years of experience. The Group was established in the year 2010.

Universal Group is well positioned for continued growth and market dominance because of its vibrant leadership. We have taken significant steps to renew and refresh the core business with high quality and innovative pattern for today's market to provide consistent service to the existing global/Indian customers.

Backed by competent and hard working team, we have been successful in earning the unwavering trust of our esteemed customers based across the Country. Our penchant for quality packaging and timely delivery of the products in the lead-time span provides us an additional edge. We endeavor to achieve customer satisfaction through continuous innovation and delivering current trends to the customers cost effectively. We introduce exciting new concepts and designs on regular basis that meet the evolving tastes of the customers in harmony with the current trends and that's motto of Universal group.

## Overview

TOUCH & MOVE

In this brochure you will find the latest range of Hardware Product from Touch & Move.

Touch & Move Slides are easy to install and are designed to provide years of reliable service throughout the home. The Touch & Move Drawer slide is available in Wide range like Zinc, Black, S.S, Push to Open, Soft Close.

Designed to provide high quality and on-going user experience, touch & Move Drawer Slides are designed for simple easy installation. Touch & move Drawer Slides are life cycle tested and are design to deliver ongoing excellent performance.



Drawer Slides  
Smart kitchen  
**Tandem Box**  
Slim Box  
Hinges

EASY ADJUSTMENT  
WITH JUST  
A FEW TURNS...



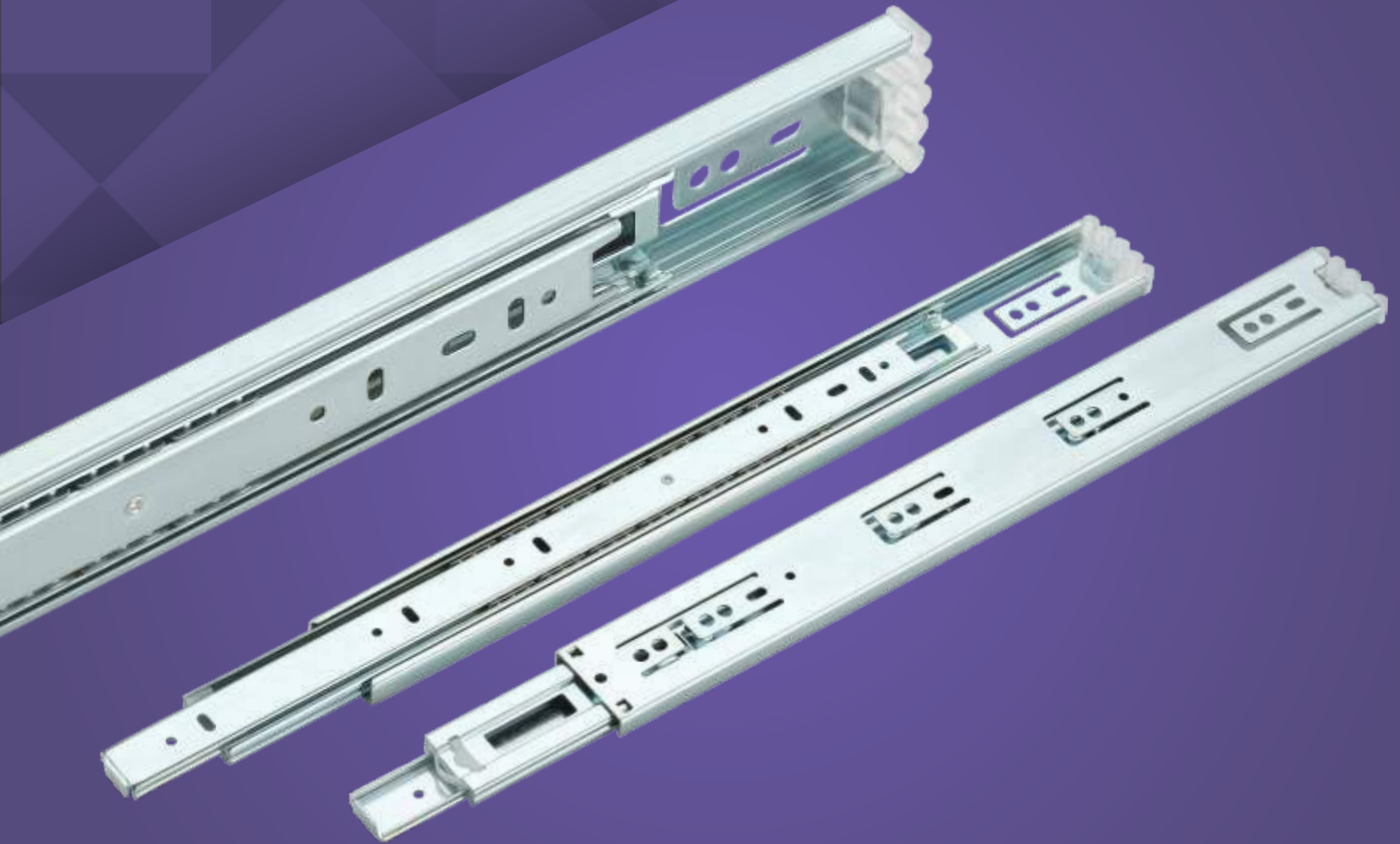
[www.unimec.in](http://www.unimec.in) |

An **ISO 9001:2015** Certified Co.

E X C L U S I V E

# ZINC

Drawer Slides



# Drawer Slides

# Zinc Drawer Slides



## Specifications

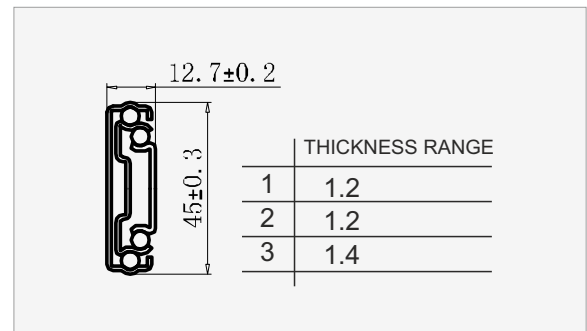
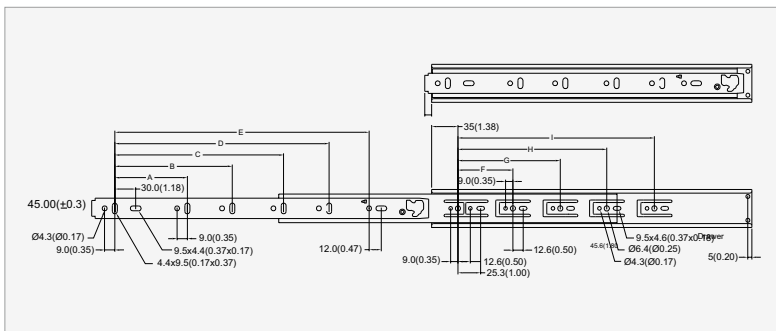
- **Length:** 200mm to 900mm (08" to 36")
- **Side Space:** 19.1mm (+0.5mm / -0mm)
- **Height:** 45mm (1.07")
- **Max. Loading:** 45kg (100lb) /pair
- **Mount:** Side Mount
- **Disconnect:** Yes (lever Disconnect)
- **Finish:** Clear Zinc
- **Material:** High Grade Corrosion Resistant Steel
- **Package:** Unit Packed in 10 pairs/ carton
- **Test:** SGS 48 hour Zinc Testing ,

## Features

- Durable damping system with fast response capability.
- Ultra smooth gliding motion with high rigidity and stability.
- Guaranteed 1,00,000 life cycles under proper installation and normal usage.
- Telescopic precision partial extension slide with positive hold in detent.
- Precision steel ball bearing offer High lateral stability.
- Anti rust German Technology for long life.
- Teflon Coating for rust free long life.



Size		Product Code	Packing
Inch	MM		
8"	200	ZR08M102	10 Set in a Carton
10"	250	ZR10M102	
12"	300	ZR12M102	
14"	350	ZR14M102	
16"	400	ZR16M102	
18"	450	ZR18M102	
20"	500	ZR20M102	
22"	550	ZR22M102	
24"	600	ZR24M102	
26"	650	ZR26M102	
28"	700	ZR28M102	
30"	750	ZR30M102	
32"	800	ZR32M102	
34"	850	ZR34M102	
36"	900	ZR36M102	



[www.unimec.in](http://www.unimec.in) |

An **ISO 9001:2015** Certified Co.

E X C L U S I V E

# BLACK

Drawer Slides



**TOUCH & MOVE**

# Drawer Slides

# Black Drawer Slides



## Specifications

- **Length:** 250mm to 600mm (10" to 24")
- **Height:** 45mm (1.07")
- **Max. Loading:** 45kg (100lb) /pair
- **Mount:** Side Mount
- **Disconnect:** Yes (lever Disconnect)
- **Finish:** Powder Coted Black
- **Material:** High Grade Corrosion Resistant Steel
- **Package:** Unit Packed in 15 pairs/ carton
- **Test:** SGS 48 hour Salt Testing

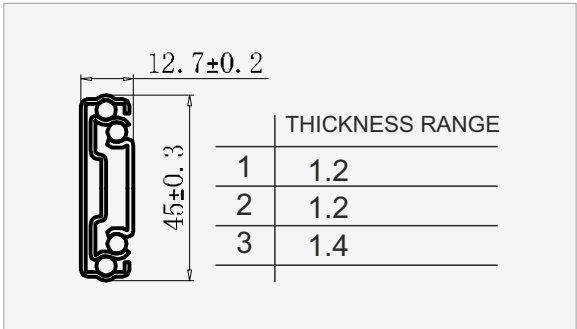
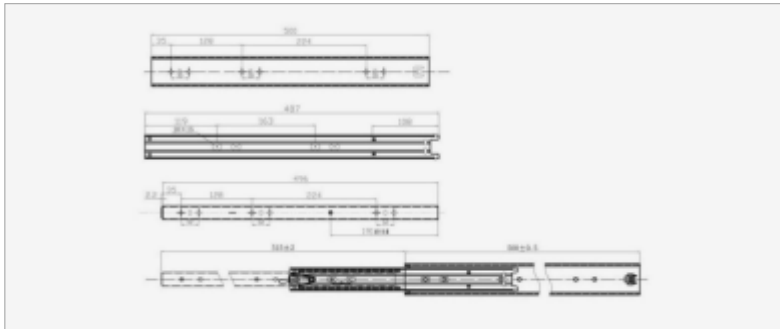
## Features

- Durable damping system with fast response capability
- Ultra smooth gliding motion with high rigidity and stability
- Guaranteed 1,00,000 life cycles under proper installation and normal usage
- Telescopic full Extension slide with positive hold in detent.
- Precision steel ball bearing offer High lateral stability
- Anti rust German Technology for long life.

Drawer  
Slide



Size		Product Code	Packing
Inch	MM		
10"	250	BR10A101	10 Set in a Carton
12"	300	BR12A101	
14"	350	BR14A101	
16"	400	BR16A101	
18"	450	BR18A101	
20"	500	BR20A101	
22"	550	BR22A101	
24"	600	BR24A101	





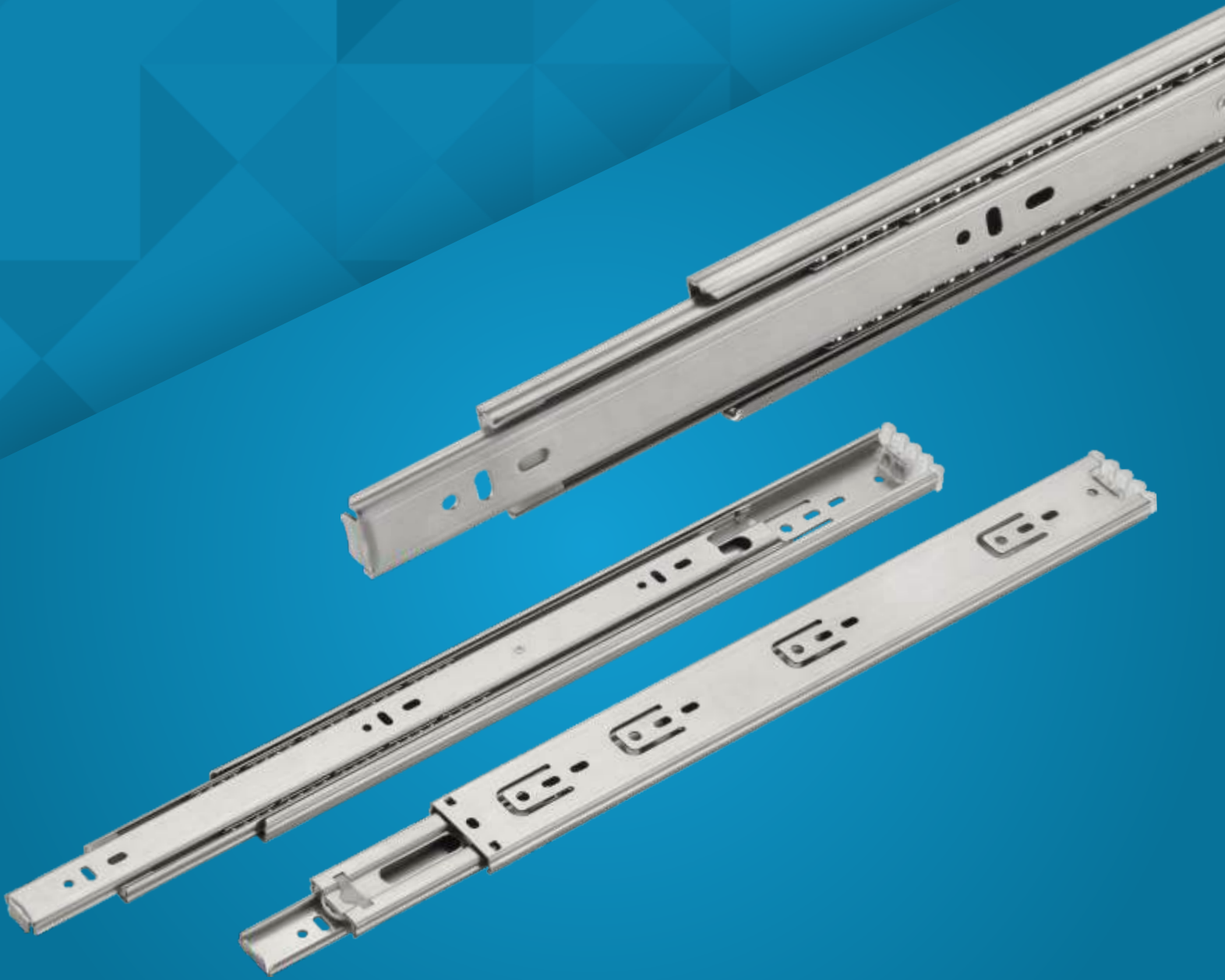
[www.unimec.in](http://www.unimec.in) |

An **ISO 9001:2015** Certified Co.

E X C L U S I V E

# STAINLESS STEEL

## Drawer Slides



# Drawer Slides



# Stainless Steel Drawer Slides



## Specifications

- **Length:** 250mm to 600mm (10" to 24")
- **Height:** 45mm (1.07")
- **Max. Loading:** 40kg. (100lb) /pair
- **Mount:** Side Mount
- **Disconnect:** Yes (lever Disconnect)
- **Finish:** Stainless Steel
- **Material:** High Grade Stainless Steel (202)
- **Package:** Unit Packed in 15 pairs/ carton
- **Test:** SGS 48 hour Salt Testing ,

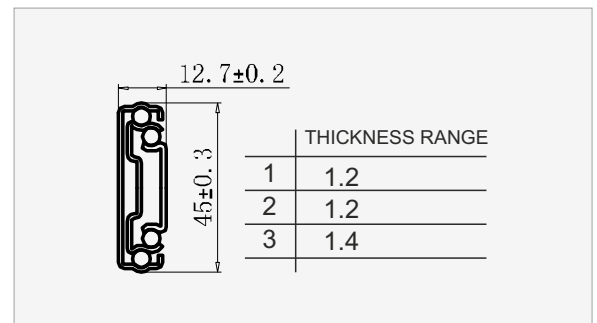
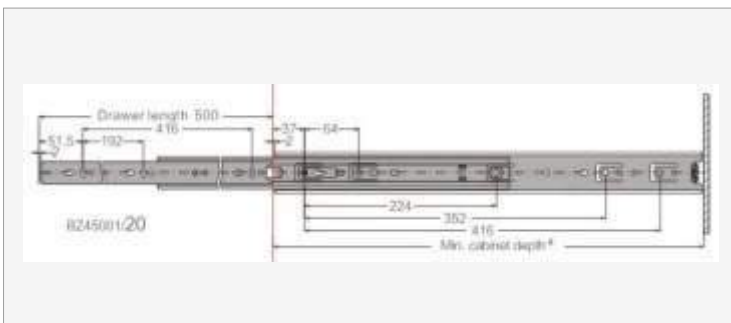
## Features

- Rust proof ASKI 202 non magnetic materials.
- Durable damping system with fast response capability
- Ultra smooth gliding motion with high rigidity and stability
- Guaranteed 1,00,000 life cycles under proper installation and normal usage
- Telescopic precision partial slide with positive hold in detent
- Precision steel ball bearing offer High lateral stability
- Anti rust German Technology for long life

S.S.  
Drawer  
Slide



Size		Product Code	Packing
Inch	MM		
10"	250	SR10A101	15 Set in a Carton
12"	300	SR12A101	
14"	350	SR14A101	
16"	400	SR16A101	
18"	450	SR18A101	
20"	500	SR20A101	
22"	550	SR22A101	
24"	600	SR24A101	



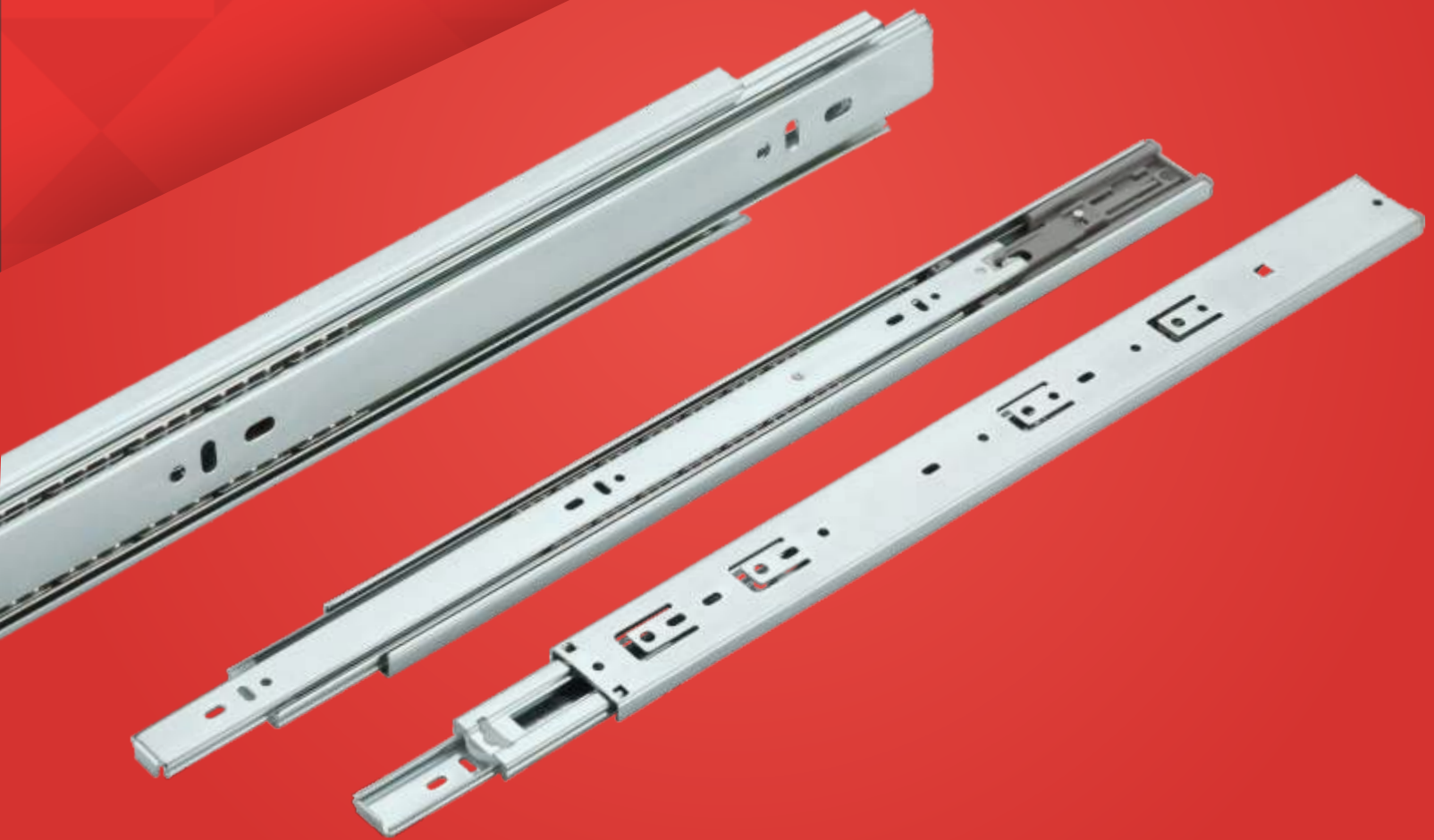
[www.unimec.in](http://www.unimec.in) |

An **ISO 9001:2015** Certified Co.

E X C L U S I V E

# SOFT CLOSE

Drawer Slides



Drawer Slides

# Soft Close Drawer Slides



## Specifications

- **Length:** 300mm to 550mm (12" to 22")
- **Height:** 45mm (1.07")
- **Max. Loading:** 40kg. (100lb) /pair
- **Mount:** Side Mount
- **Disconnect:** Yes (lever Disconnect)
- **Finish:** Clear Zinc
- **Material:** High Grade Corrosion Resistant Steel
- **Package:** Unit Packed in 10 pairs/ carton
- **Test:** SGS 48 hour Zinc Testing

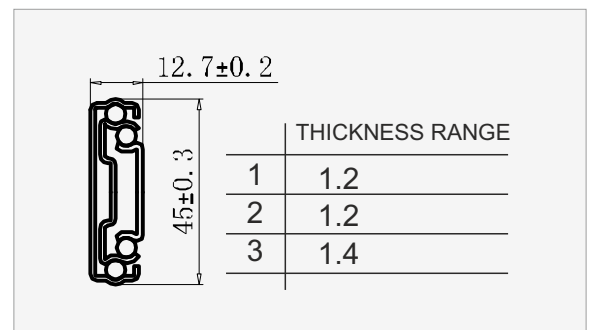
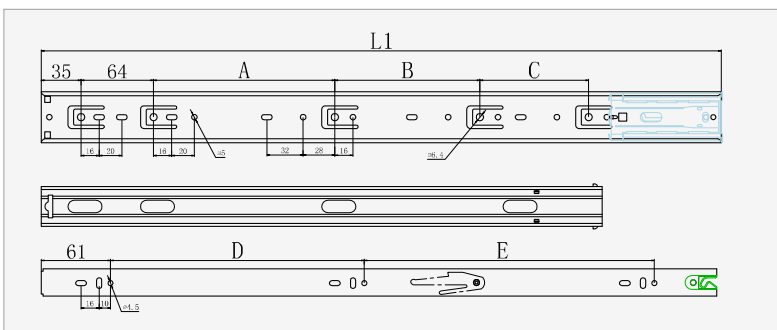
## Features

- Enhanced salient Soft Closing feature with light Closing Force
- Durable damping system with fast response capability
- Ultra smooth gliding motion with high rigidity and stability
- Guaranteed 80,000 life cycles under proper installation and normal usage
- Telescopic precision partial Extension slide with positive hold in detent.
- Precision steel ball bearing offer High lateral stability
- Anti rust German Technology for long life.

Soft close  
Drawer  
Slide



Size		Product Code	Packing
Inch	MM		
12"	300	SC12M101	10 Set in a Carton
14"	350	SC14M101	
16"	400	SC16M101	
18"	450	SC18M101	
20"	500	SC20M101	
22"	550	SC22M101	



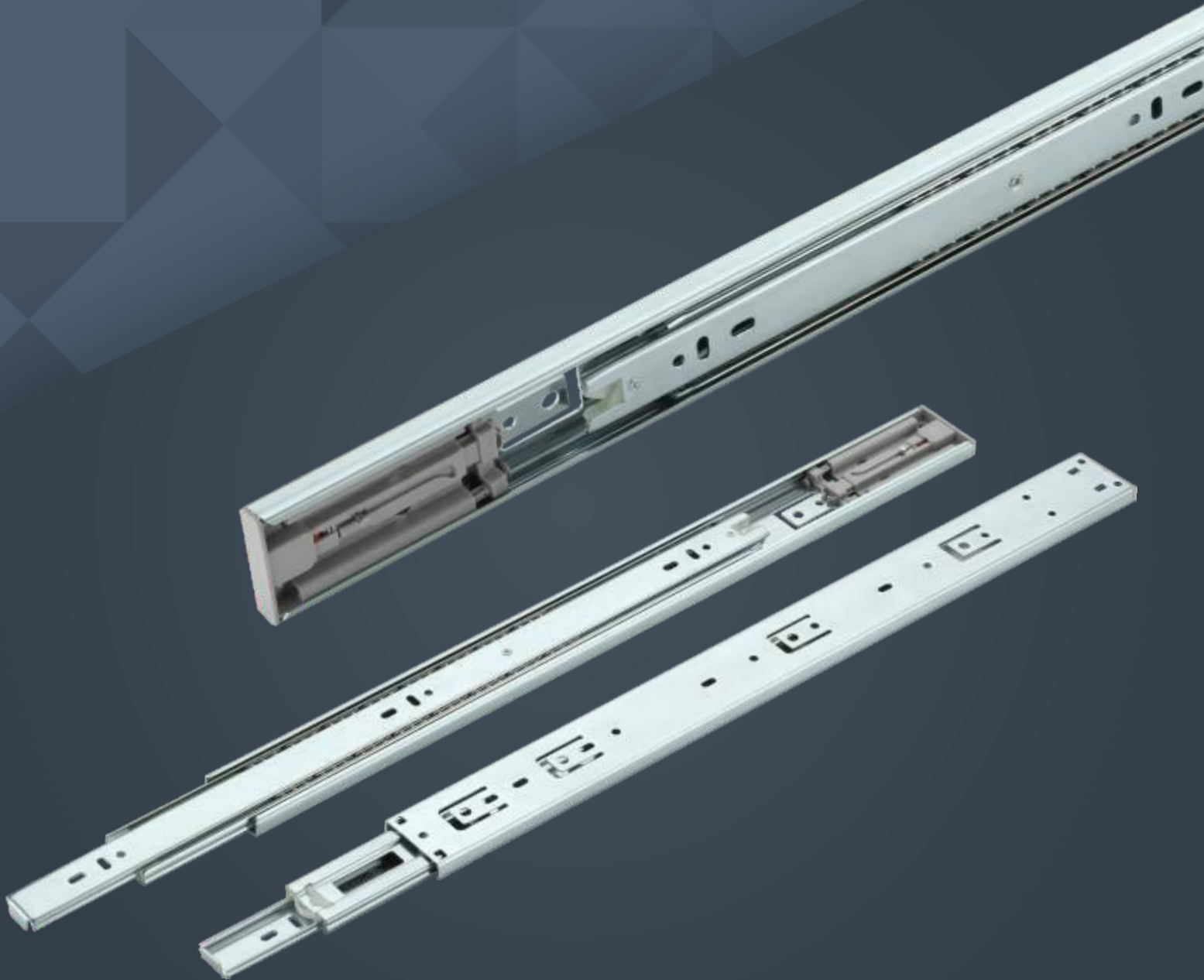
[www.unimec.in](http://www.unimec.in) |

An **ISO 9001:2015** Certified Co.

E X C L U S I V E

# PUSH TO OPEN

Drawer Slides



# Drawer Slides



# Push To Open Drawer Slides



## Specifications

- **Length:** 300mm to 550mm (12" to 22")
- **Height:** 45mm (1.07")
- **Max. Loading:** 40kg. (100lb) /pair
- **Mount:** Side Mount
- **Disconnect:** Yes (lever Disconnect)
- **Finish:** Clear Zinc
- **Material:** High Grade Corrosion Resistant Steel
- **Package:** Unit Packed in 10 pairs/ carton
- **Test:** SGS 48 hour Zinc Testing

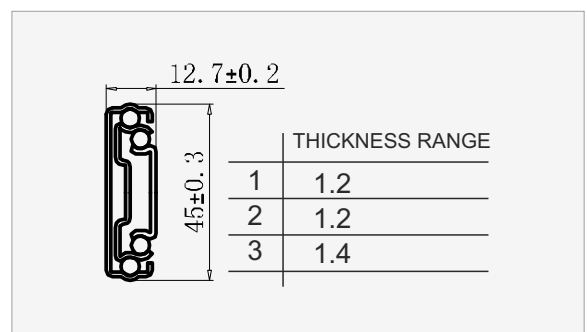
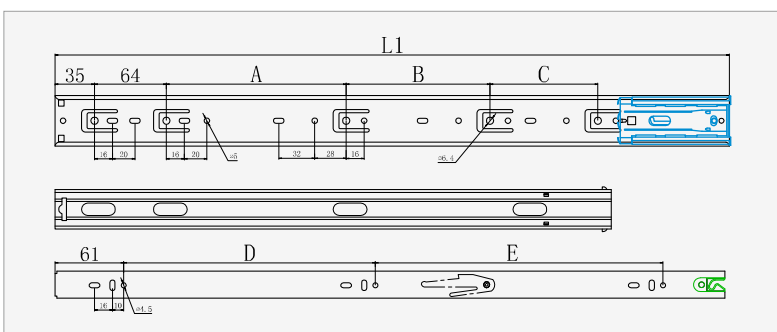
## Features

- Push to open Handle free cabinet Drawer
- The exclusive design allows the Drawer to be forced open once pushed
- Durable damping system with fast response capability
- Ultra smooth gliding motion with high rigidity and stability
- Guaranteed 80,000 life cycles under proper installation and normal usage
- Precision steel ball bearing offer High lateral stability
- Anti rust German Technology for long life.

Push to Open  
Drawer  
Slide



Size		Product Code	Packing
Inch	MM		
12"	300	PTO12M101	10 Set in a Carton
14"	350	PTO14M101	
16"	400	PTO16M101	
18"	450	PTO18M101	
20"	500	PTO20M101	
22"	550	PTO22M101	



EXCLUSIVE

# Slim Box Drawer



Smart kitchen  
Drawer  
Slim Box



# Slim Tandem Box



## Specifications

- **Length:** 400mm to 600mm (16" to 24")
- **Height :** 86mm, 150mm, 182mm
- **Finish:** Graffite grey
- **Travel:** Full Extension
- **Drawer Side Thickness:** 20mm
- **Wall Thickness :** 1mm
- **Max. Load Capacity:** 45 kg(100 lb)/pair
- **Mount:** Side mount
- **Material:** Slider : Galvanized Steel, Wall : Mild Steel  
Plastic Parts - Virgin Plastic Material
- **Package:** Unit Packed in 4-6 pairs/carton

## Features

- Concealed under mounted runners with full extension travel length
- Ultra smooth gliding motion with high rigidity and stability
- Enhanced silent soft-closing feature with light opening force
- Durable damping system with fast response capability
- Simple drawer assembly and removal with the front release latch of Steel
- Dynamic loading capacity of 45kg (100lb) with 1,00,000 life cycles under proper installation and normal usage.
- Easy Attaching and Removal of Drawer.



Product Code	Size		Packing
	Inch	MM	
ST416S1A	4"x16"	86 x 400	6 Set in a Carton
ST418S1A	4"x18"	86 x 450	
ST420S1A	4"x20"	86 x 500	
ST422S1A	4"x22"	86 x 550	
ST616S1A	6"x16"	150 x 400	4 Set in a Carton
ST618S1A	6"x18"	150 x 450	
ST620S1A	6"x20"	150 x 500	
ST622S1A	6"x22"	150 x 550	
ST816S1A	8"x16"	182 x 400	4 Set in a Carton
ST818S1A	8"x18"	182 x 450	
ST820S1A	8"x20"	182 x 500	
ST822S1A	8"x22"	182 x 550	



EXCLUSIVE

[www.unimec.in](http://www.unimec.in)

# Regular Tandem Box Drawer



**TOUCH & MOVE**

Soft Close  
Drawer  
Slim Box



# Regular Tandem Box



## Specifications

- **Length:** 450mm, 500mm and 550mm
- **Height :** 84mm, fully adjustable with Gallery to customised height.
- **Finish:** Graphite grey
- **Travel:** Full Extension
- **Drawer Side Thickness:** 20mm
- **Max. Load Capacity:** 45 kg.(100 lb)/pair
- **Mount:** Side mount
- **Material:** Slider : Galvanized Steel, Wall : Mild Steel  
Plastic Parts - Virgin Plastic Material,  
Gallery : High Grade aluminium
- **Package:** Unit Packed in 6 Set In Carton.

## Features

- Concealed under mounted runners with full extension travel length
- Ultra smooth gliding motion with high rigidity and stability
- Enhanced silent soft-closing feature with light opening force
- Durable damping system with fast response capability
- Simple drawer assembly and removal with the front release latch of Steel
- Dynamic loading capacity of 45kg (100lb) with 1,00,000 life cycles under proper installation and normal usage
- Height can be customized with square gallery

Smart kitchen  
Drawer  
Tandem

Product Code	Size		Packing
	Inch	MM	
RT418S1A	4"x18"	84 x 450	6 Set in a Carton
RT420S1A	4"x20"	84 x 500	
RT422S1A	4"x22"	84 x 550	
GL18A101	Gallery 18"	450	25 Set in a Master Carton
GL20A101	Gallery 20"	500	
GL22A101	Gallery 22"	550	



Hinge systems

[www.unimec.in](http://www.unimec.in) |

# Soft Close Concealed Hinges



Soft Close  
Hinges

# 01. MS Auto Hinges



Type	Full Overlay
Product Code	MH00MSC1



Type	Half Overlay
Product Code	MH08MSC1



Type	Insert
Product Code	MH16MSC1

## Specifications

Material	Iron
Finish	Nickel Plated
Angle Of Opening	105°
Cup Diameter	35mm
Depth	11.5mm
Hole Pitch	48mm
Door Thickness	14-20mm
Weight	105 gm

## Features

- Silent system, The built in Concealed soft-closing mechanism make cabinet close gently and quietly
- Clip-on Adjustment for easy Installation
- Two way cam hinge for easy adjustment
- 2D Adjustable, Horizontal and vertical changes can be made with adjustable screws
- Used high grade cold rolled material and matt finish Nickle Plating
- Come with 2 body cover and screw
- Available in 0, 8 and 16 Crank for different position installation
- Creative and Innovative new look



## 02. 3D Auto Hinges



Type	Full Overlay
Product Code	AH003DC1



Type	Half Overlay
Product Code	AH083DC1



Type	Insert
Product Code	AH163DC1

### Specifications

Material	Iron
Finish	Nickel Plated
Angle Of Opening	105°
Cup Diameter	35mm
Depth	11.5mm
Hole Pitch	48mm
Door Thickness	14-20mm
Weight	115 gm

### Features

- Silent system, The built in Concealed soft-closing mechanism make cabinet close gently and quietly.
- Clip-on Adjustment for easy Installation.
- Two way cam hinge for easy adjustment.
- 3D adjustable, Horizontal, vertical and height changes can be made with adjustable screws.
- Used high grade cold rolled material and matt finish Nickle Plating.
- Come with 2 body cover and screw.
- Available in 0, 8 and 16 Crack for different position installation.
- Creative and Innovative new look.



## 03. SS Auto Soft Close Hinges



Type	Full Overlay
Product Code	AH00AAC1



Type	Half Overlay
Product Code	AH08AAC1



Type	Insert
Product Code	AH16AAC1

### Specifications

Material	Stainless Steel
Finish	Nickel Plated
Angle Of Opening	102°
Cup Diameter	35mm
Depth	12mm
Hole Pitch	48mm
Door Thickness	14-21mm
Weight	105 gm

### Features

- Silent system, The built in Concealed soft-closing mechanism make cabinet close gently and quietly.
- Clip-on Adjustment for easy Installation.
- Two way cam hinge for easy adjustment.
- 2D adjustable, Horizontal and vertical changes can be made with adjustable screws.
- Used high grade cold rolled material and matt finish Nickle Plating.
- Come with 2 body cover and screw.
- Available in 0, 8 and 16 Crack for different position installation.
- Creative and Innovative new look.

# 04. SS Auto heavy Hinges



Product	Packaging Box
---------	---------------

Type	Half Overlay
Product Code	BH00135C1

Type	Insert
Product Code	BH08135C1

## Specifications

Material	Stainless Steel
Finish	Nickel Plated
Angle Of Opening	105°
Cup Diameter	36mm
Depth	11.50mm
Hole Pitch	48mm
Door Thickness	14-21mm
Weight	135 gm

## Features

- Silent system, The built in Concealed soft-closing mechanism make cabinet close gently and quietly.
- Clip-on Adjustment for easy Installation.
- Two way cam hinge for easy adjustment.
- 2D adjustable, Horizontal and vertical changes can be made with adjustable screws.
- used high grade cold rolled material and matt finish Nickle Plating.
- Come with 2 body cover and screw.
- Available in 0 and 8 Crack for different position installation.
- Creative and Innovative new look.



# Solutions for Smart Spaces

## Universal Metacrafto

Rajkot (Guj.) India.

E-mail : [info@unimec.in](mailto:info@unimec.in)

Web : [www.unimec.in](http://www.unimec.in)